

## FOR IMMEDIATE RELEASE

### ***Look East!2 - Asian Perspectives***

22 FEBRUARY - 22 MARCH 2013

Mizuma Gallery is very pleased to present ***Look East!2 - Asian Perspectives***, its second group show at Gillman Barracks from **22 February to 22 March 2013**. This exhibition presents a selection of contemporary artists from Japan and Asia, continuing to introduce the rich programme of Mizuma Gallery to the Singaporean audience. Exhibiting artists are Makoto Aida, Juri Hamada, Toru Ishii, Hyung Koo Kang, Akino Kondoh, Jun Nguyen-Hatsushiba, Rieko Sakurai, Ai Yamaguchi and Zheng Jiang.

#### **Makoto Aida (\*1965, Japan)**

Though grotesque and erotic in style, Aida's work displays an incisive critical faculty when it comes to political and historical issues. While projecting modern Japanese society, he simultaneously draws heavily on traditional artworks and modes of expression. Aida's solo show *Aida Makoto: Monument for Nothing* is running at the Mori Art Museum (Tokyo) from 17 November to 31 March 2013.

#### **Juri Hamada (\*1973, Japan)**

Born in Indonesia, Hamada's work finds its origin in the distinctive red colour of the country's soil. Her attachment to the crimson land and the sheer dimension of this primordial landscape made her aware of the relative insignificance of mankind, pushing her through her work towards a broader understanding of life.

#### **Toru Ishii (\*1981, Japan)**

Ishii studied the techniques and history of *yuzen-zome* (Japanese dyeing technique) at the Tokyo University of the Arts. He transposes *yuzen-zome*'s application from practical use to the field of visual arts. The subtle texture of the silk is emphasized by the extreme vividness of colours and the daring and humorous compositions introducing pop elements different from traditional patterns, rendering an overwhelming presence which is captivating.

#### **Hyung Koo Kang (\*1954, Korea)**

Kang is fast establishing himself as one of Korea's most renowned artists for his intense portraits of various celebrities, artists, political figures, anonymous persons and even himself. Several of his more notable works include an aged Marilyn Monroe and Andy Warhol, a smoking Vincent Van Gogh and Mao Zedong. His portraits are renowned for capturing the phenomenon of the fixing of the gaze in any encounter of two people. Kang covets for his large-scale portraits to engulf his audience and extract mutual dialogues with the viewer and also himself through his subject's profound gaze.

#### **Akino Kondoh (\*1980, Japan)**

Kondoh is an artist and animator known for her striking, minimalist compositions, often executed with nothing more than graphite and watercolor. She has exhibited internationally, earning fundings from the Japanese Agency for Cultural Affairs and the Pola Art Foundation. She was also awarded a residency in New York and received the support and collaboration of jazz musician John Zorn, who has used her art on his album covers. Her work was awarded a YouTube Play - A Biennial of Creative Video Award at the Guggenheim Museum, New York, in 2010 and the DIGISTA Awards' Animation Division Grand Prix in 2002 among others.

**Jun Nguyen-Hatsushiba (\*1968, Vietnam/Japan)**

Born to a Japanese mother and a Vietnamese father in Japan and educated in the United States, Nguyen-Hatsushiba now works and lives in Ho Chi Minh City, Vietnam. His films and installations explore memory, history and national identity, with alienation as their central theme. He has extensively exhibited in museums all over the world including the Mori Art Museum, Tokyo (2004), and the 51st Venice Biennale (2005).

**Rieko Sakurai (\*1977, Japan)**

When a girl who feels full of almighty power meets an obstacle, she wipes her tears to hide her aggressiveness within, leaving her pains and aimless curses painted under the flat surface. In Sakurai's series titled *"The Violent Rainbow"*, each of the 7 cute girls are floating freely on a vivid colour background, holding a weapon. They are all in white innocent outfits and seem to enjoy some games or be ready to fight against some unknown enemy.

**Ai Yamaguchi (\*1977, Japan)**

12 years have passed since Yamaguchi started out her career as an artist, 12 years spent depicting these alter egos in the shape of young girls. During all this time, she has been striving to fulfill her childhood wish of "painting beautiful things". Her works conjure up a sense of curiosity and amazement within the viewer, due to the depiction of the young girls from multiple angles and in a wide variety of poses. Yamaguchi's style has also been said to combine "flatness", regarded as a particular characteristic feature of traditional Japanese art, with trends in Japanese subculture.

**Zheng Jiang (\*1980, China)**

Zheng's work is a creation in pursue of spiritual comfort. Troubled by insomnia, he slowly focused on inner needs instead of recording surrounding objects and previous memories. He uses a new way of figurative painting by using a more abstract expression language, to form changeable and bright-coloured blocks in hope to get closer to every individual to think profoundly the condition of our current society and mentality. The repeated "begonia" pattern is Zheng's working way of measuring time everyday while keeping him clam when facing society.

## Opening Reception

Friday, 22 February 2013, 6PM

Exhibition will open on Friday, 22 February 2013, 6PM.

## Gallery Profile

Mizuma Gallery was first established in Tokyo by Sueo Mizuma in 1994 with the mission of promoting Asian and Japanese artists both on the local and international contemporary art scenes. Its Singapore opening will be the 3rd expansion for Mizuma Gallery with current spaces in Tokyo, Japan and Beijing, China. Mizuma Gallery is a key gallery for the development of Japanese contemporary art and has exhibited at important art fairs such as ARCO (Madrid), Armory Show (New York), Frieze (London), FIAC (Paris), Basel Miami (Miami) and Hong Kong Art Fair (Hong Kong).

## About Gillman Barracks

Gillman Barracks (GB) is Asia's up-and-coming destination for contemporary art. It will be distinguished as a vibrant centre in Asia for the creation, exhibition and discussion of contemporary art. Named after British general Sir Webb Gillman, GB is set amid lush greenery and was once a stronghold to the First Battalion of the Middlesex Regiment. The conserved colonial barracks will house galleries and creative businesses, as well as the Centre for Contemporary Art (CCA) Singapore. The international galleries will feature diverse and ever-changing contemporary art exhibitions, while CCA Singapore will bolster the region's visual arts landscape through its international artist residency, research and exhibition programmes. By fostering cultural exchange and creation, showcasing the best and most innovative art of our times, as well as generating discourse and research, CCA Singapore will establish Singapore as an important centre for contemporary art in Asia. Gillman Barracks was officially launched on 14 September 2012, and open to public from 15 September 2012. The Centre for Contemporary Art (CCA) Singapore will open in 2013. More information on Gillman Barracks can be found at [www.gillmanbarracks.com](http://www.gillmanbarracks.com).

## Contact

For further inquiries and high resolution images, please contact the following :

Antoine Perrin (English, French, Japanese): [antoine@mizuma.sg](mailto:antoine@mizuma.sg)

Loh Xiang Yun (English, Chinese): [xiangyun@mizuma.sg](mailto:xiangyun@mizuma.sg)

### Mizuma Gallery

22 Lock Road #01-34

Gillman Barracks

Singapore 108939, Singapore

T. +65 6570 2505

F. +65 6570 2506

[www.mizuma.sg](http://www.mizuma.sg)

[info@mizuma.sg](mailto:info@mizuma.sg)

Hours Tue-Sat 11-7 Sun 11-6



## Makoto Aida



### **"AZEMICHI (a path between rice fields)"**

Edition of 60, 2012, Print on archival paper, 60 x 80 cm

**Made after the original artwork:**

**"AZEMICHI (a path between rice fields)"**

1991, Panel, Japanese paper, Japanese mineral pigment, acrylic, 73 x 52 cm



## Juri Hamada



### Houka s50

2011

Foil, mineral pigments, glue, hemp paper, board

116.7 x 116.7 cm

**Toru Ishii**



**"Going to work Battle I"**

2013

Yuzen dyeing on silk, panel

29.5 x 60 cm



**"Going to work Battle II"**

2013

Yuzen dyeing on silk, panel

29.5 x 60 cm



## Hyung Koo Kang



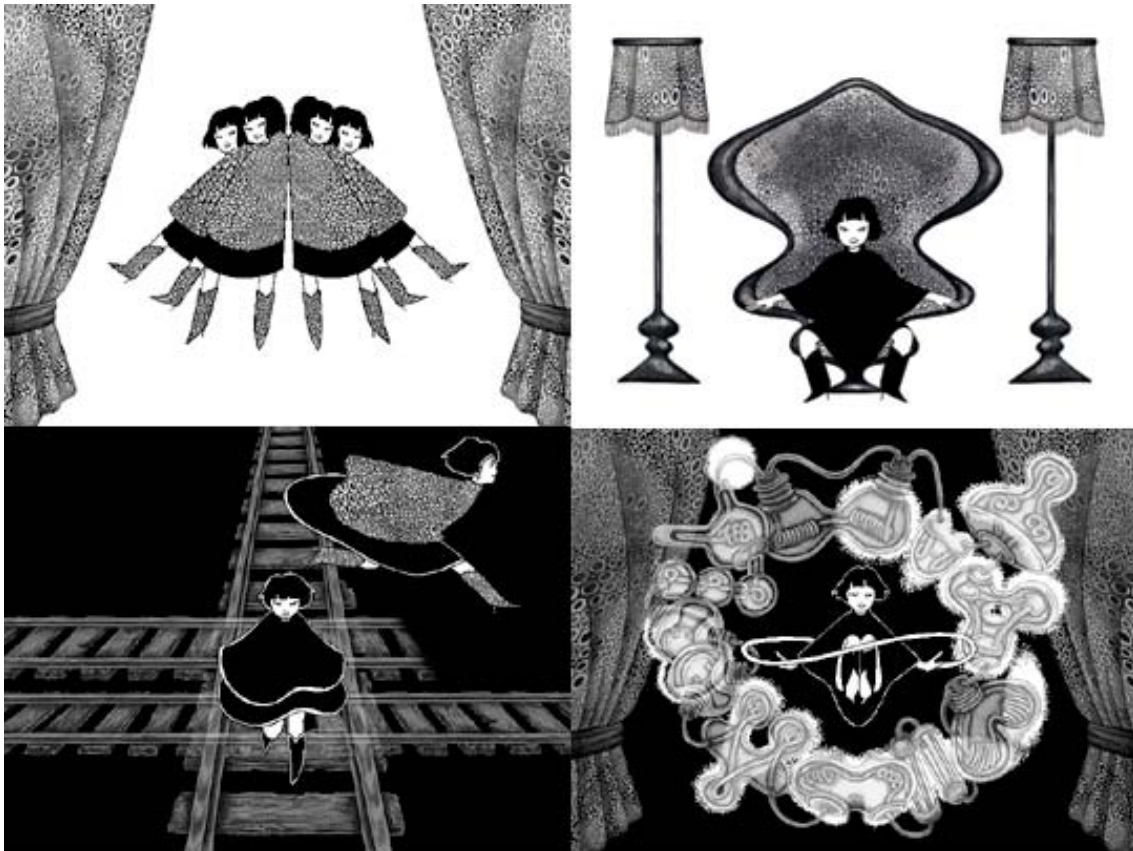
### Red Marilyn Monroe

2012

Oil on canvas

193 x 259 cm

## Akino Kondoh



### The Evening Traveling

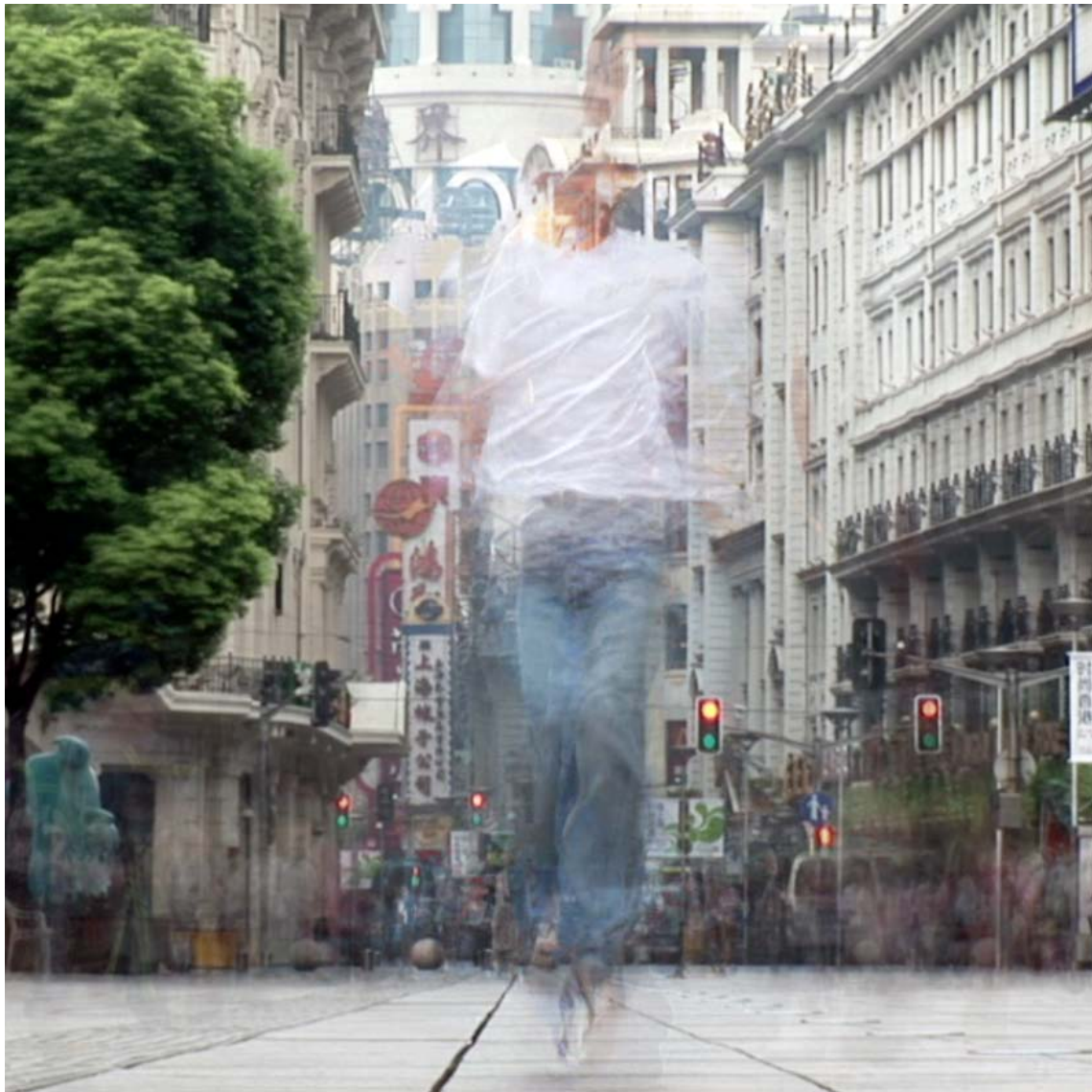
2001-2002

DVD

3min 56sec



## Jun Nguyen-Hatsushiba



### **49 Meters 49 Times: A Rehearsal with Entities in Shanghai**

2010

Single channel digital video

1 min.

Rieko Sakurai



**The Violent Rainbow**

2010

Oil on canvas

130 x 87 x 4.5 cm

**Ai Yamaguchi**



**yama to naru (6/20)**

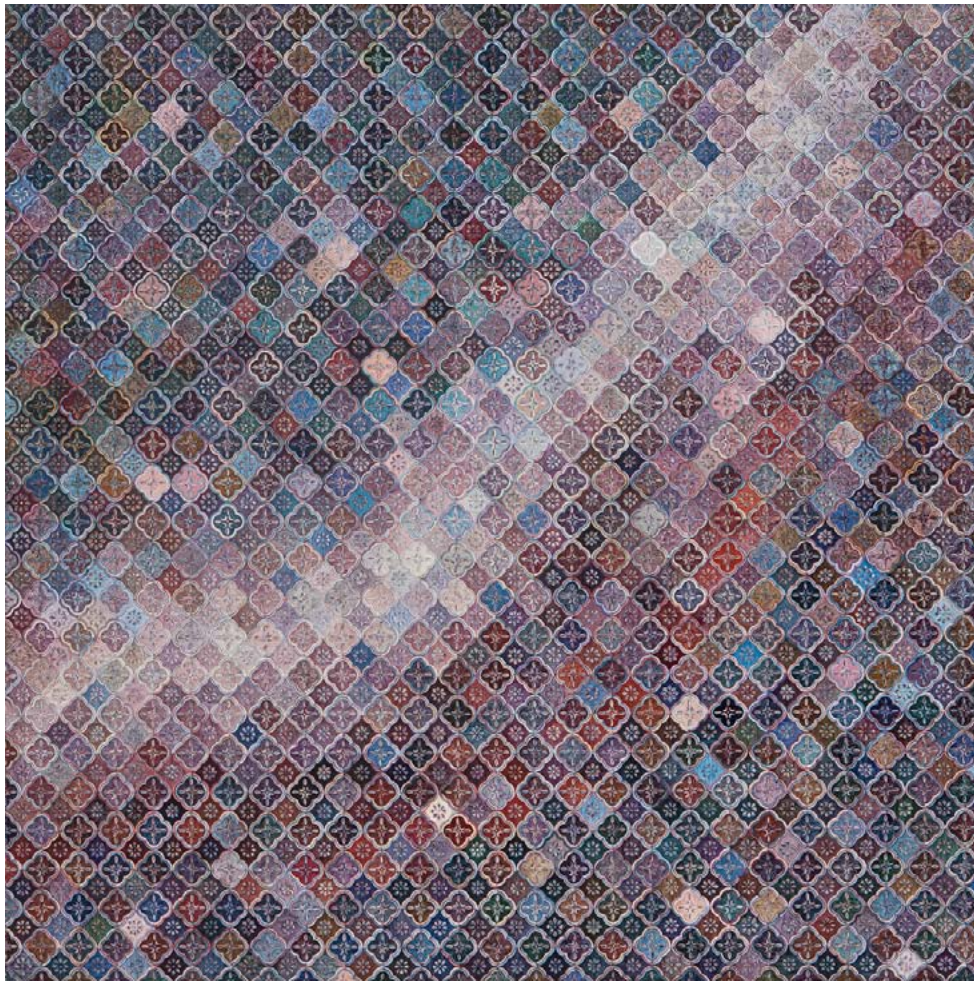
2011

Acrylic on paper, panel

40 x 34 x 1.8 cm



## Zheng Jiang



### Birthmark 3

2012

Tempera on canvas

200 x 200 cm