

ODE TO WONDERLAND

EGUCHI AYANE

03 / 03 -

08 / 04 / 2018

 IZUMA GALLERY

ODE TO WONDERLAND

It is with great pleasure to have Mizuma Gallery present the solo exhibition of Japanese painter, Eguchi Ayane, titled "Ode to Wonderland".

Ode to Wonderland is Eguchi's first solo exhibition in Singapore, and will showcase her most recent works inspired by her childhood, her residency at Yogyakarta, Indonesia, and her inner thoughts. Her paintings invite audiences to reflect on their perspective on life and mortality. As quoted from Charlie Chaplin, "Life is a tragedy when seen in close-up, but a comedy in long shot" .

The character 'KUMA' appears in all of Eguchi's paintings. According to her, 'KUMA' are things that live and die; they

are everywhere and yet nowhere. Having a resemblance to kuma, the Japanese word for 'bear', they look superficially cute, but what is inside of them remains unknown.

Eguchi has always detests the taste of bitterness, making it a struggle for her since young to swallow bitter medicine whenever she was ill. Exasperated, her mother came to a compromise with the artist to coat the pills with sugar, hence masking the bitterness and convincing her to take them. Similarly in life, we experience many bitter moments which are hard to swallow. For Eguchi, she wishes to experience them all by coating them in sugar, and in that way, she will be able to keep on living.



It might bear
2017
oil on canvas
27.4 x 22.1 cm

While on her residency programme in Yogyakarta, Indonesia, Eguchi had the opportunity to snorkel in the sea. Mesmerised by the clamorous beauty of the half dead corals, she braved the sea with just a simple snorkelling gear. Little did she know, the hard spikes of the corals had brushed against her and inflicted her with painful wounds. To the artist, that is the nature of life, we are bound to get wounded sometimes but that does not make the experience any less enjoyable or regrettable.

At a glance, sweet, colourful, and whimsical would best describe Eguchi's works. Her paintings transport the viewer to a candy-coloured fantasy scenery, but on closer look, it reveals macabre narratives. The intricate process of covering the darkness with something so colourful to create these very contradictions within one landscape is

what draws me to Eguchi's works. It is where one experiences the extremities between pleasant and unpleasant, life and death, and yet all these exist in harmony.

Bitterness and sweetness coexist like a yin and yang diagram of opposing forces in nature, and like a Möbius strip, they support one another inseparably. To her, the world is both a Paradise and Hell, and to be able to keep on living, she has to find a way to mask the bitterness of life.

It is always fascinating to see Eguchi Ayane's paintings, and it is an honor to be presenting her works in Mizuma Gallery Singapore.

- Mizuma Gallery

“

Life is a tragedy when
seen in close-up, but
a comedy in long-shot.

”

- Charlie Chaplin



Memento mori
2017
oil on canvas
130.2 x 162.2cm

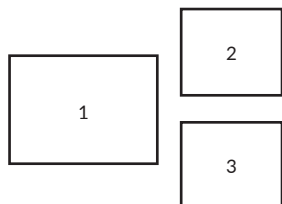


Left to right:
KUMA 3,
KUMA 1,
KUMA 2
2017
oil on cotton mounted panel
143 x 133 cm



1. *Sea of glass*
2017
oil on canvas
24.7 x 33.4 cm

2. *Drifter*
3. *Drifter A and B*
2017
oil on canvas
45.8 x 53.6 cm





Theater
2017
oil on canvas
194.5 x 325 cm



Left to right:

Build a house

2017

oil on canvas
45.7 x 53.1 cm

Wave

2016

oil on canvas
27.4 x 22.1 cm

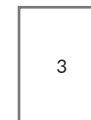
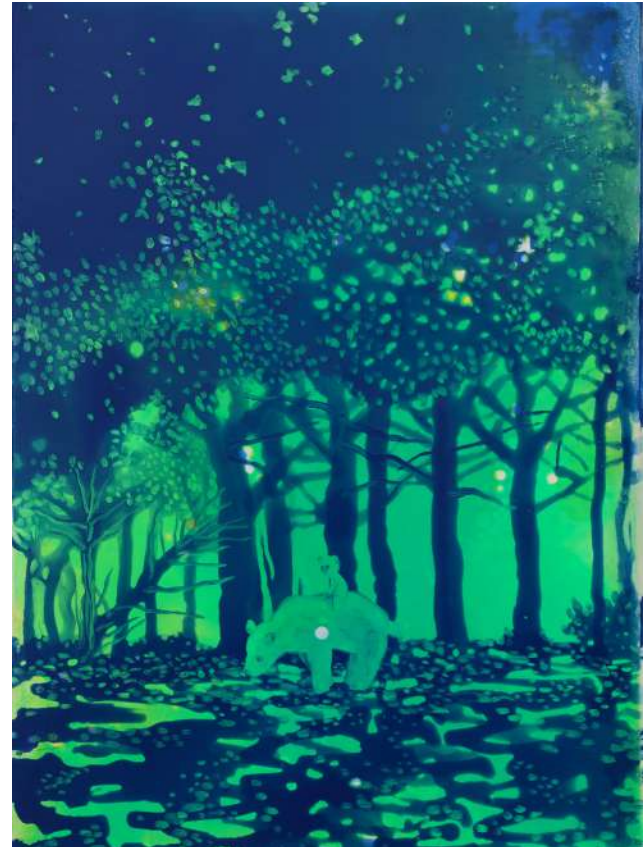
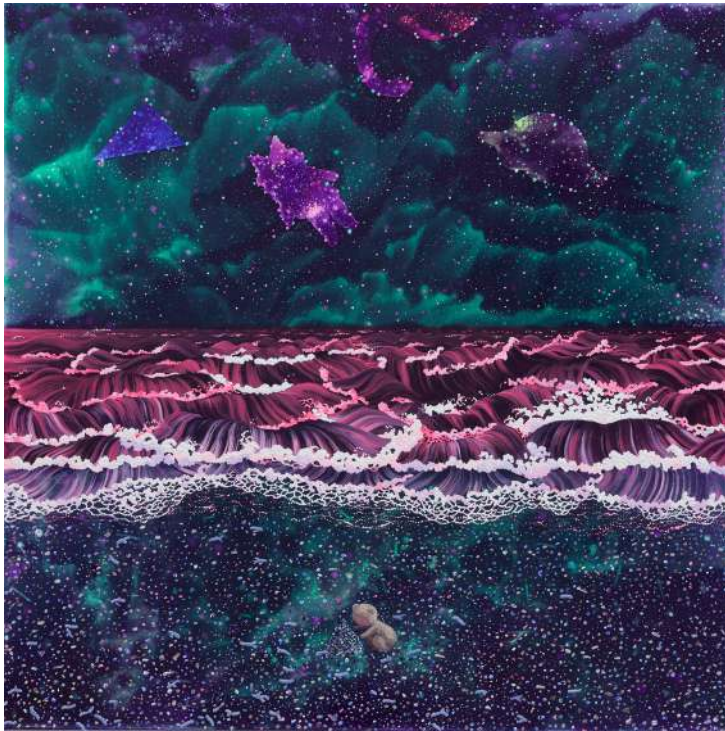
Avalanche

2017

oil on canvas
27.4 x 22.1 cm



Lolipop bear
2018
oil on canvas
194.5 x 325 cm



1. *Star sign UMA*
2017
oil on canvas
91.1 x 73 cm

2. *Fog*
2017
oil on canvas
73 x 91.1 cm

3. *Slave*
2017
oil on canvas
33.4 x 24.7 cm



Cobalt violet sea
2016
oil on canvas
130.5 x 162.2 cm



Trash and the river
2016
oil on canvas
116.7 x 116.7 cm

Eguchi Ayane

Born in Hokkaido, 1985

Lives and works in Kanazawa, Japan

Education

2011 M.A. in Oil Painting, Kanazawa College of Arts, Kanazawa, Japan.

Solo Exhibitions

2018 *Ode to Wonderland*, Mizuma Gallery, Singapore
2013 *Mystical Kingdom*, MIZUMA ACTION, Tokyo, Japan
2011 *Fuwa•moko•sarasa•ra*, Tokyo Wonder Site Hongo, Tokyo, Japan

Group Exhibitions

2016 *Seeing the Unseen*, Gallery Ohrin, Ibaraki, Japan
Eyes & Curiosity-anomaly, Mizuma Art Gallery, Tokyo, Japan
Art Stage Jakarta 2016, Mizuma Gallery, Sheraton Grand Jakarta Gandaria City Hotel, Jakarta, Indonesia
Art Stage Singapore 2016, Mizuma Gallery, Marina Bay Sands Convention Centre, Singapore
2015 *Bazaar Art Jakarta 2015*, Mizuma Gallery, The Ritz-Carlton Pacific Place, Jakarta, Indonesia
Universal Influence, ART|JOG|9, Jogja National Museum, Yogyakarta, Indonesia
Further towards the future, Mizuma Gallery, Singapore
2014 *Impacts! Japan Art Festival*, Zane Bennett Contemporary Art × Mizuma Art Gallery, Santa Fe, New Mexico, USA
2012 *To the Future*, MIZUMA ACTION, Tokyo, Japan
2011 *The Selections from Graduation Works 2011*, artgummi, Kanazawa, Japan
2010 *2010 Kawaii Exhibition*, Seibu Shibuya, Tokyo, Japan
carre 2010, Gallery TEN, Kanazawa, Japan
WONDER SEEDS 2010, Tokyo Wonder Site Shibuya, Tokyo, Japan
carre a zurich, Zurich Insurance Company, Zurich, Switzerland
2009 *carre a zurich*, Gallery TEN, Kanazawa, Japan
via art 2009, Shinwa Art Museum, Tokyo, Japan
Jinzukyo Art Exhibition 2009, Oosawano Shogaigakusyu Center, Toyama, Japan
Tokyo Wonder Wall 2009, Museum of Contemporary Art Tokyo, Tokyo, Japan
closs, Green Arts Gallery, Ishikawa, Japan
4th Mitsubishi Corporation Art Gate Program, Eye of Gyre, Tokyo, Japan

ODE TO WONDERLAND

3 March - 8 April 2018

Mizuma Gallery Pte. Ltd.
22 Lock Road #01-34
Gillman Barracks
Singapore 108939
T: +65 6570 2505
F: +65 6570 2506
www.mizuma.sg
info@mizuma.sg

Executive Director: Sueo Mizuma
Text: Eguchi Ayane
Editor: Fredy Chandra, Theresia Irma, Marsha Tan
Design: Cai Yun Teo
Printer: Print Ideas

General Manager: Fredy Chandra
Gallery Manager: Theresia Irma
Gallery Liaison: Cai Yun Teo, Marsha Tan

First published in Singapore, 2018,
in a print run of 300.

Text © Mizuma Gallery

Artworks Images © Eguchi Ayane, courtesy of
Mizuma Gallery.

© 2018 Mizuma Gallery, writers and artists.
All rights reserved under International copyright
conventions. No part of this catalogue may be
reproduced or transmitted in any form
or by any means, electronic or mechanical,
including photocopy, recording or any other
information storage and retrieval system
without prior permission from the publisher.

Cover: Eguchi Ayane, *KUMA 2* (detail),
© Eguchi Ayane, courtesy of Mizuma Gallery.

GILLMAN BARRACKS

Mizuma Gallery is a part of Gillman Barracks (GB) is Asia's up-and-coming destination for contemporary art. It is distinguished as a vibrant centre in Asia for the creation, exhibition and discussion of contemporary art. Named after the late British General Sir Webb Gillman, GB is now home to 12 international art galleries, five restaurants, as well as the NTU Centre for Contemporary Art (CCA) Singapore. For more information, please visit www.gillmanbarracks.com

MIZUMA GALLERY

Mizuma Gallery was established in Singapore's new art cluster Gillman Barracks in September 2012 by director Sueo Mizuma. The gallery was established in 1994 in Tokyo, and since its opening in Singapore aims for the promotion of Japanese artists in the region as well as the introduction of new and promising young talents from South East Asia to the international art scene. The gallery creates a new vector of dialogue within Asia, by exchanging art projects between East Asia and South East Asia. Mizuma Gallery has featured the works of Japanese artists including Aida Makoto, Amano Yoshitaka, Tenmyouya Hisashi, Ikeda Manabu, Aiko Miyana, and Yamaguchi Akira. Moreover, it has showcased the work of renowned East Asian artists such as Ken and Julia Yonetani, Jun Nguyen-Hatsushiba, Susan Philipsz, Ai Weiwei, and Du Kun. The gallery also organises exhibitions featuring the creations of Indonesia's forerunner artists including Heri Dono, Nasirun, Made Wianta, indieguerillas, Albert Yonathan S., Entang Wiharso, Zen Teh, Gilang Fradika, Agan Harahap, Agung Prabowo, and Angki Purbandono. Mizuma Gallery also participates yearly in Art Basel Hong Kong and The Armory Show, New York.

