

FOR IMMEDIATE RELEASE

Entang Wiharso

Hybrid Brain

19 September – 21 October 2018

Opening reception: Wednesday, 19 September 2018, 6pm - 9pm, with a performance by Entang Wiharso which will commence at 7pm



Mizuma Gallery is pleased to announce *Hybrid Brain*, a solo exhibition by celebrated Indonesian artist, Entang Wiharso.

Entang Wiharso is one of Indonesia's most acclaimed contemporary artists and is known for creating provocative works loaded with bold visuals and distinctive imageries. Since 1997, Entang, his American wife, and two children have shuttled between Yogyakarta where his Indonesian studio is located, and his studio in Rhode Island, U.S., progressively belonging and un-belonging to his land of origin. These two vastly different countries have become important parts of his identity, and this dichotomy of cultures, personal opinions, and experiences are reflected in his works.

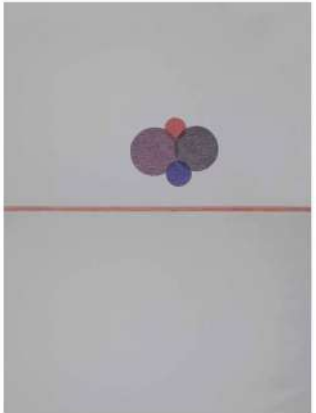
In this exhibition, Entang explores the issues of identity, belonging, and otherness in an increasingly mobile society where acceptance and integration are rare privileges coloured by ideology, social statues, and genetic heritage. Disguised by thick impasto and a vivid palette, and through the use of glitter, collage, ink and,

occasionally, car paint, the seemingly abstract works on canvas of *Ground Zero*, *Hibernation*, *Floating Garden*, and *Precaution* are reminiscent of landscape painting where the flat surface of the canvas is deployed to portray the artist's emotions in relation to his surroundings. However, in these works, natural elements such as the sky and the earth, typical of the landscape format, and their relation to the human being, are reshuffled and transformed through the artist's emotions and "mind notes" and are translated on the canvas according to his medium of choice.

Hybrid Brain will showcase Entang Wiharso's newest body of works that was intentionally produced in his two studios located in Yogyakarta and Rhode Island, where he is an Indonesian artist in the former, and an American in the latter. It is a reflection on the concept of 'identity' as a social conditioning that further unpacks notions of alienation and prejudice to which, in various degrees, we are all subjected to in society.

The exhibition opens with a performance by Entang Wiharso on Wednesday, 19th September 2018. Titled *Hibernation: Ground Zero*, the performance will see the creation of a participatory artwork that will be ongoing throughout the duration of the exhibition.





About the Artist

Entang Wiharso (b. 1967, Tegal, Central Java, Indonesia) graduated from the Indonesian Institute of Arts in Yogyakarta, majoring in Painting, in 1987. He has had solo exhibitions across Asia, Europe and the U.S. including recent exhibitions such as *Half Degree of Separation* at Tang Contemporary Art, Bangkok, Thailand (2018); *Promising Land* at Marc Straus, New York, USA (2017); and *Never Say No* at Singapore Tyler Print Institute, Singapore (2015). Entang has also participated in major group shows as *Pathos of the Fringes* at Jeonbuk Museum of Art, Jeollabuk-do, South Korea (2018); *Folkloristics* at Mizuma Gallery, Singapore (2018); *Allegories & Identities* at Singapore Tyler Print Institute, Singapore (2017); *Odyssey: Navigating Nameless Seas* at Singapore Art Museum, Singapore (2016); *Love: The First of the 7 Virtues* at Hudson Valley Center for Contemporary Art, New York, USA (2015); *Open Sea at Musée d'art contemporain*, Lyon, France (2015); *Prospect.3: Notes for Now* at Contemporary Arts Center New Orleans, Louisiana, USA (2014-15); and *All You Need Is Love* at Mori Art Museum, Tokyo, Japan (2013) amongst many others. Entang is represented in numerous notable collections, including the Guy and Myriam Ullens Foundation, Switzerland; the Olbricht Collection, Berlin, Germany; Indonesian Art Institute, Yogyakarta, Indonesia; National Gallery of Victoria, Melbourne, Australia; the Rubell Family Collection, Miami, USA; and the Singapore Art Museum, Singapore. Entang Wiharso lives and works in Rhode Island, USA, and Yogyakarta, Indonesia.

About the Gallery

Mizuma Gallery was established in 1994 in Tokyo, and since its opening in Gillman Barracks, Singapore in 2012, it aims for the promotion of Japanese artists in the region as well as the introduction of new and promising young talents from Southeast Asia to the international art scene. In 2014, the artist residency space "Rumah Kijang Mizuma" opened in Yogyakarta, Indonesia, to create a new vector of dialogue within Asia, by supporting exchanges between East Asia and Southeast Asia.

About Gillman Barracks

Set in a former military barracks dating back to 1936 and surrounded by lush tropical greenery, the Gillman Barracks visual arts cluster was launched in September 2012. Gillman Barracks' vision is to be Asia's destination for the presentation and discussion of international and Southeast Asian art. Today, Gillman Barracks is a place for art lovers, art collectors, and those curious about art. The cluster is a focal point of Singapore's arts landscape, and anchors the development of visual art in the region and beyond. For more information: www.gillmanbarracks.com

Press Contacts

Teo Cai Yun
caiyun@mizuma.sg

Marsha Tan
marsha@mizuma.sg

Mizuma Gallery
22 Lock Road #01-34
Gillman Barracks
Singapore 108939

Gallery hours:
Tue-Sat: 11am-7pm
Sun: 11am-6pm
Closed on Mondays &
Public Holidays

www.mizuma.sg
www.mizuma.shop
www.mizuma-art.co.jp

Copyright and Image Credits:

Text: © Loredana Pazzini-Paracciani and
Mizuma Gallery

Entang Wiharso
Reconciliation - Ground Zero (2018)
acrylic, ink, thread, resin, colour pigment,
glitter on canvas
200 x 287 cm
© Entang Wiharso
courtesy of the artist and Mizuma Gallery

Entang Wiharso
Precaution: Five Eyes (2018)
acrylic, oil colour, photo collage, glitter on
canvas
182.5 x 147 cm
© Entang Wiharso
courtesy of the artist and Mizuma Gallery

Entang Wiharso
Hibernation (2018)
acrylic, ink, glitter on canvas
213 x 125 cm
© Entang Wiharso
courtesy of the artist and Mizuma Gallery

Entang Wiharso
Reconstruction Floating Garden (2018)
ink, acrylic, glitter, and car paint on canvas
145 x 214 cm
© Entang Wiharso
courtesy of the artist and Mizuma Gallery

Entang Wiharso
Art History: Indonesia Diaspora (2015)
ballpoint, and car paint on linen
200 x 600 cm
(4 panels, each panel 200 x 150 cm)
© Entang Wihaso
courtesy of the artist and Mizuma Gallery