



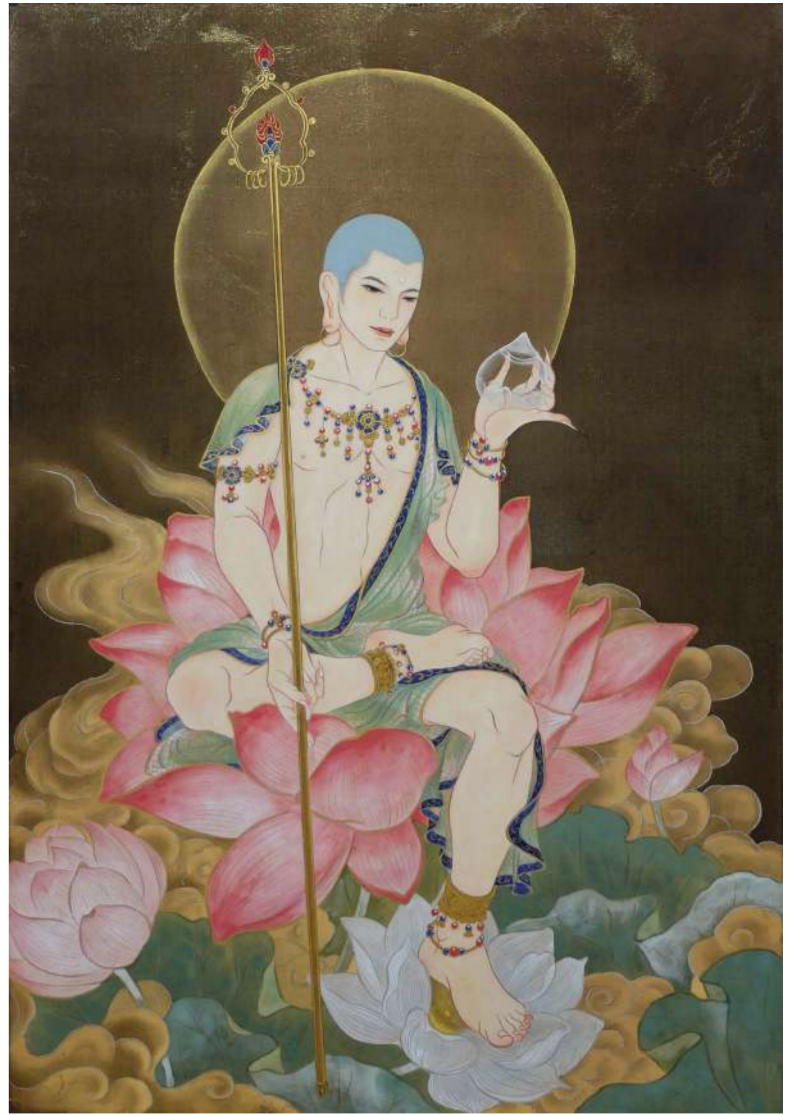
▲ Kato Ai (Ai☆Madonna)
Blue Wall - Happy De Matomeruna-
2015
acrylic on canvas
72.7 x 116.7 cm



▲ Mizuno Rina
Peach Patterned Curtain
2019
oil on canvas
53 x 53 cm



▲ Kobayashi Satoshi
Pig
2019
acrylic on low relief board
42 x 60 cm



▲ Kimura Ryoko
Jizo Bodhisattva
2018
ink, mineral pigments, and gold leaf
on silk mounted on a hanging scroll
with gold leaf on the back
148 x 61 cm

on wood are primitive ways that allow him to freely express his ideas and imaginations. In this exhibition, Kobayashi Satoshi showcases one of his new works mde of disjointed pieces of wooden boards, as an attempt to manifest the feelings of discord and modesty. Each piece of board contains wooden carvings of a certain aspect of nature. When the pieces are connected, each individual imagery comes together in interaction, merging into one singular artwork representing the chaos and beauty of nature and man.



▲ Mizuno Rina
Entrance to the Limestone Cave
2019
oil on canvas
100 x 80 cm

Each of Mizuno Rina's work consists of multiple layers on a flat surface that encapsulates a sense of three-dimensionality. Upon closer look, we are able to observe the textural richness of the oil painting. The intricate details in her works are inspired by Turkish miniature paintings, while her brushstrokes are influenced by the ink paintings of Jakuchu Ito (Japan, 1719 – 1800). Mizuno Rina's attention to texture and colours is reflected in her use of unprimed hemp canvas and her exploration of various shades and tones produced by mixing different colours of oil paints.

Eyes & Curiosity— Flowers in the Field 16 March - 21 April 2019

Mizuma Gallery Pte Ltd
22 Lock Road, #01-34 Gillman Barracks,
Singapore 108939
T. +65 6570 2505
F. +65 6570 2506
www.mizuma.sg
www.mizuma.shop
info@mizuma.sg

Tue-Sat: 11am - 7pm
Sun: 11am - 6pm
Closed on Mondays and Public Holidays

Facebook.com/mizumagallery
Instagram @mizumagallery

Executive Director: Mizuma Sueo
General Manager: Fredy Chandra
Gallery Manager: Theresia Irma
Gallery Liaison: Cai Yun Teo, Marsha Tan

Design: Cai Yun Teo
Printer: Print Ideas
First published in Singapore, 2019, in print
run of 300.

Text © Mizuma Gallery
Cover Image: Kato Ai (Ai☆Madonna),
Kusattemo Lolicon - Bubble Bath - (detail),
2016, acrylic on canvas, 72.7 x 116.7 cm,
© Kato Ai (Ai☆Madonna), courtesy of
Mizuma Gallery

Images © Kato Ai (Ai☆Madonna), Kimura
Ryoko, Kobayashi Satoshi, and Mizuno Rina,
courtesy of the artists and Mizuma Gallery.

© 2019 Mizuma Gallery, writer, artists. All
rights reserved under International copyright
conventions. No part of this leaflet may
be reproduced or transmitted in any form
or by any means, electronic or mechanical,
including photocopy, recording or any other
information storage and retrieval system
without prior permission from the publisher.

—

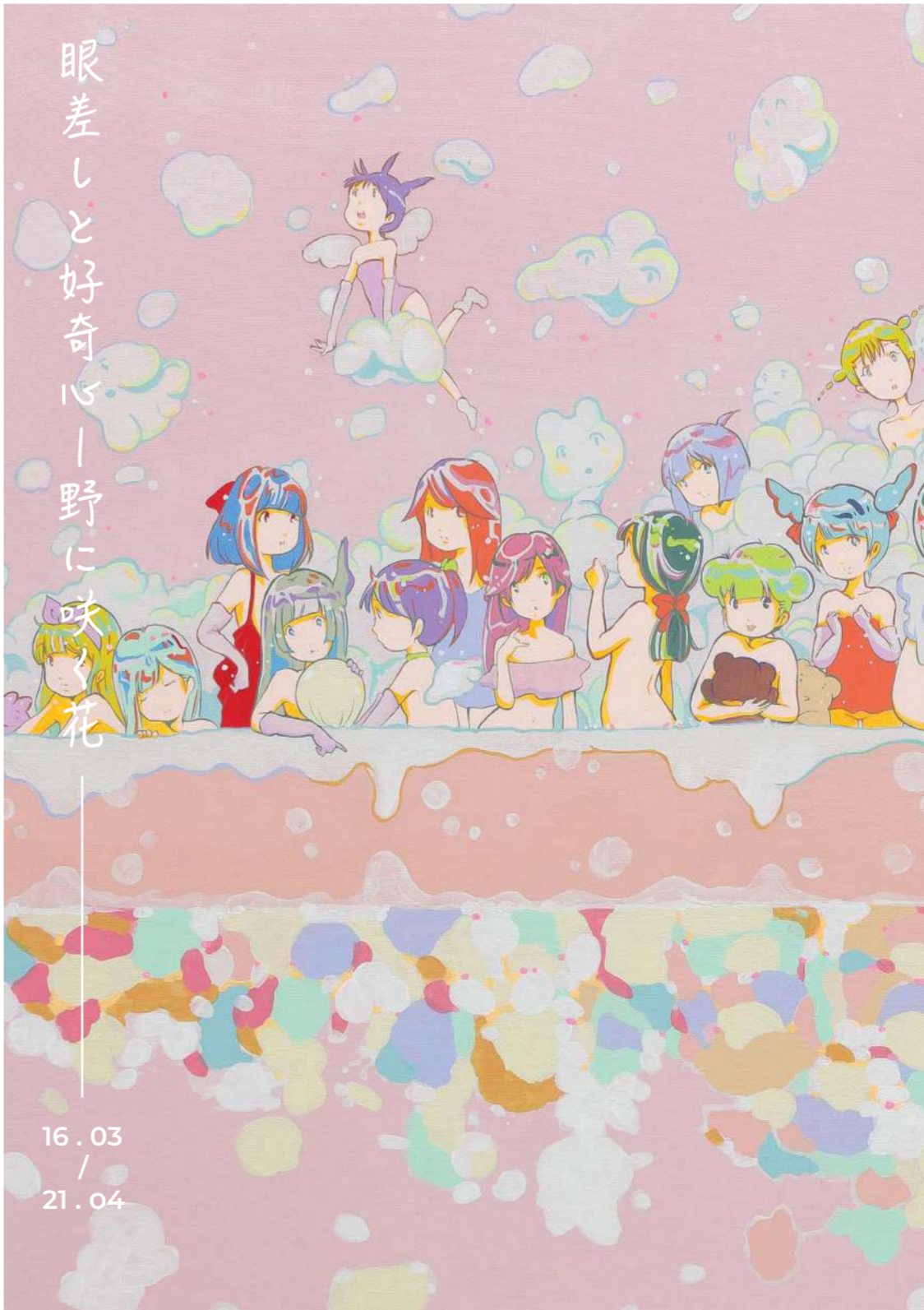
MIZUMA GALLERY

Executive Director Sueo Mizuma established
Mizuma Art Gallery in Tokyo in 1994. Since
its opening in Gillman Barracks, Singapore
in 2012, the gallery aims for the promotion
of East Asian artists in the region as well as
the introduction of Southeast Asian artists
to the international art scene. In 2014,
the artist residency space "Rumah Kijang
Mizuma" opened in Yogyakarta, Indonesia,
to create a new platform for dialogue by
supporting exchanges between East Asian
and Southeast Asian artists. In 2018, a
new gallery space, "Mizuma, Kips & Wada
Art" opened in New York, USA, as a shared
collaboration between Mizuma Gallery from
Tokyo and Singapore, Kips Gallery from New
York, and Wada Garou from Tokyo.

Mizuma Gallery features the works of
Japanese artists including Aida Makoto,
Aiko Miyanaga, Amano Yoshitaka, Ikeda
Manabu, Tenmyouya Hisashi, and Yamaguchi
Akira. Moreover, it showcases the works of
renown East Asian artists such as Ai Weiwei,
Du Kun, Jun Nguyen-Hatsushiba, Ken + Julia
Yonetani, and Zhao Zhao. The gallery also
features the creations of prominent and
emerging artists from the region including
Agan Harahap, Albert Yonathan Setyawan,
Angki Purbandonno, Entang Wiharso, Gilang
Fradika, Heri Dono, indiegueillas, Made
Wianta, Mark Justiniani, Nasirun, Robert
Zhao Renhui, and Zen Teh. Mizuma Gallery
participates annually in international art
fairs including Art Basel Hong Kong and The
Armory Show, New York.

GILLMAN BARRACKS

Set in a former military barracks dating back to
1936 and surrounded by lush tropical greenery,
the Gillman Barracks visual arts cluster was
launched in September 2012. Jointly developed
by government agencies, the Singapore Economic
Development Board (EDB), the National
Arts Council (NAC) and the JTC Corporation
(JTC), Gillman Barracks' vision is to be Asia's
destination for the presentation and discussion of
international and Southeast Asian art.
For more information, please visit
www.gillmanbarracks.com



16 . 03
/
21 . 04

Eyes & Curiosity— Flowers in the Field

Mizuma Gallery is pleased to announce
Eyes & Curiosity—Flowers in the Field,
a group exhibition by four Japanese
artists selected by Executive Director,
Mizuma Sueo. Showing for the first
time at Mizuma Gallery, Singapore,
Kato Ai (Ai☆Madonna), Kimura Ryoko,
Kobayashi Satoshi, and Mizuno Rina
will present artworks that embody

new interpretations of traditional
techniques and explore the relevance
of old ideals in today's society.

Known for solely painting girls in her
works, Kato Ai (Ai☆Madonna) visualises
feminine beauty through *Bishojo* motifs
of female figures. Her interest stems
from her belief that girls are the most
beautiful subjects to illustrate. Kato Ai's
drawings and paintings depict the idea
of "untouchable" beauty that exists
only in the world of anime or manga—
devoid of real physical contact.

Through the use of *Nihonga* or neo-
traditional Japanese painting style,
Kimura Ryoko's works focus on
her quintessential motif of *ikemen*
(good-looking men). By reversing the
concept of *Bijin-ga* (the representation
of beautiful women in Japanese art),
Kimura Ryoko portrays *ikemen* in the
contemporary Eastern world from a
woman's perspective.

Having studied woodblock printing
when he was twelve years old,
Kobayashi Satoshi developed a strong
interest in this artmaking technique. To
him, drawing, carving, and scratching



▲ Kato Ai (Ai☆Madonna)
I didn't ask, but you already know...
2014
acrylic on canvas
100 x 100 cm



▲ Kato Ai (Ai☆Madonna)
live painting 1
2018
acrylic on canvas
60.5 x 50 cm



▲ Kato Ai (Ai☆Madonna)
live painting 2
2018
acrylic on canvas
60.5 x 50 cm



▲ Kato Ai (Ai☆Madonna)
live painting 3
2018
acrylic on canvas
60.5 x 50 cm

Live Painting Performance by Kato Ai (Ai☆Madonna)

In conjunction with the opening of *Eyes & Curiosity—Flowers in the Field*, Mizuma Gallery presents a live painting performance by Kato Ai (Ai☆Madonna).

Kato Ai (Ai☆Madonna)'s live paintings started in 2007, in the streets of Akihabara, Tokyo, Japan. In those days, Akihabara was bustling with street performances, ranging from songs and instruments, to group dances and cosplays. Knowing that, the artist thought to herself, "Let's do something that nobody has ever done before." And so she began by spreading out a large paper and started to paint right on the street.

For her, who till then had only showcased her paintings in galleries, doing live performances had opened her up to the various possibilities of expressions.

She is hoping that art can become more familiar and accessible for everyone that exceeds beyond the borders of galleries. Through these live painting performances, the artist would like to share her awe and excitement that she felt when she started doing them, involving as many various places, countries and people.

加藤愛 ☆まどんな



Kato Ai (Ai☆Madonna)

Born in Tokyo, Japan, 1984
Lives and works in Tokyo, Japan

Education

2004 Bigakko Art School (Class of Aida Makoto), Tokyo, Japan
2003 Art and Design Course, Tokyo Metropolitan Art High School, Tokyo, Japan

Solo Exhibitions

2017 *A sunny and genius*, WALL Harajuku, Tokyo, Japan
Ambiguous U Meeha Love, AWAJI Cafe and Gallery, Tokyo, Japan
2014 *Yellow of happiness ...*, VV Shibuya Udagawa, Tokyo, Japan
It is not my fault that my complexion is bad, pixiv Zingaro, Tokyo, Japan
2012 *HATSU-MOE - LOVE & Dragon -*, Digger Gallery Workshop, Tokyo, Japan
2011 *AI☆MADONNA Trick Art 9F*, BT gallery, Tokyo, Japan
2010 *Sekirara Bishoujo Cumulonimbus*, galaxxy, Tokyo, Japan
2009 *Fruit*, antique studio Minoru, Tokyo, Japan
KYUPIN, Mizuma Action, Tokyo, Japan

Group Exhibitions

2019 *Eyes & Curiosity—Flowers in the Field*, Mizuma Gallery, Singapore
2016 *Kumano brush x Ai☆Madonna*, Au Pek osaka, Osaka, Japan
2015 *Blood and smells turn into love*, Two people's exhibition by Nukeme and Ai, GALLERY X BY PARCO, Tokyo, Japan
SHIBUKARU MATSURI goes to BANGKOK, Bangkok, Thailand
CREATORS TOKYO, Aoyama spiral, Tokyo, Japan
JAPAN EXPO, Paris, France
Impacts! -勢み - Japanese Contemporary Art, in collaboration with Mizuma Art Gallery, Tokyo, Japan, Zane Bennett Contemporary Art, Santa Fe, New Mexico, United States
2013 *Hello*, Shibuya Tokyo, Singapore
Circulation, Fundokin Mansion, Oita, Japan
Character Party feat. Neocos Exhibition, Daimaru Shinsaibashi Kita-kan, Osaka, Japan
Wakuwaku SHIBUYA, Wonder Site Shibuya, Tokyo, Japan
National Art Art Exhibition !!, NADiff gallery, Tokyo, Japan
SPINCOLLECTIF TOKYO Exhibition: FLYING SAUCER ATTACK, Digger Gallery Workshop, Tokyo, Japan
2010 *Chokotto Love*, antique studio Minoru, Tokyo, Japan
Neocos Exhibition, MIG x WALL, Tokyo, Japan
A little bit, I do not like you, Two-person exhibition with Calm, TANA Gallery, Tokyo, Japan
Entrance Fee - drawings by emerging artists, Art Market Whole, Tokyo, Japan
Eyes and Curiosity vol.6, Mizuma Art Gallery, Tokyo, Japan
2009 *Mixed Bathing Spa World*, Wakuwaku Mixed-Bed Apartment, Oita, Japan
Beppu Contemporary Art Festival, Beppu, Japan
Hero, Turner Gallery, Tokyo, Japan
Current Affairs, Turner Gallery, Tokyo, Japan
Eyes & Curiosity vol.5, Soka Art Center, Taipei, Taiwan
2008 *Chasing Cobalt Blue*, ZENSHI, Tokyo, Japan
Tokyo nonsense, SCION space, Los Angeles, United States
sometimes, Turner Gallery, Tokyo, Japan
2007 *JAPAN WEEK 2007 in Warsaw*, Warsaw, Poland
Candle in Art - Ai-chan Bonsai -, The Ueno Royal Museum, Tokyo, Japan
2005 *Orihara's special exhibition in spring - Ai-chan bonsai -*, Ohara Museum Hirakata, Okayama, Japan
Premonition of love - Ai-chan bonsai -, Mizuma Art Gallery, Tokyo, Japan
- Since 1994 - Mizuma Art Gallery 10th Anniversary Exhibition, Mizuma Art Gallery, Tokyo, Japan
2004 *Daily transformation - Les metamorphoses du quotidien -*, Gunma Prefectural Museum of Modern Art, Gunma, Japan
Kotatsu 2, Mizuma Art Gallery, Tokyo, Japan



木村了子



Kimura Ryoko

Born in Kyoto, Japan, 1971
Lives and works in Tokyo, Japan

Education

1997 M.A. in Mural Painting, Tokyo National University of Fine Arts and Music, Tokyo, Japan
1995 B.A. in Oil Painting, Tokyo National University of Fine Arts and Music, Tokyo, Japan

Solo Exhibitions

2018 *Tenderheartedness*, Kyoto-ba, Kyoto, Japan
2016 *IkemenMärchen*, Artcomplex Center of Tokyo, Tokyo, Japan
2015 *Beaute Animale de L'Homme*, Galerie Vanessa Rau, Paris, France
2014 *Be your animals*, TORAUMARIS | SPACE, Tokyo, Japan
2013 *MA PETITE AVANTURE - Where is my Prince?*, Kanazawa Art Gummi, Kanazawa, Japan
2012 *LA FASCINATION DES BEAUX HOMMES*, Galerie Vanessa Rau, Paris, France
2011 *Paradise*, Mizuma Action, Tokyo, Japan
2010 *The Date for Marriage Hunting*, SUGOROKU, Gallery KIDO press, Tokyo, Japan
2009 *Born to be WILD*, The Butchart International Contemporary Art Space, Taipei, Taiwan
Born to be WILD, Mizuma and One Gallery, Beijing, China
2008 *Prince Come True*, The Butchart International Contemporary Art Space, Taipei, Taiwan
2007 *Prince Come True*, GalleryYES/ Produced by Mizuma Action, Tokyo, Japan

Group Exhibitions

2019 *Eyes & Curiosity—Flowers in the Field*, Mizuma Gallery, Singapore
2016 *Asian contemporary Scene Part I*, Shanghai Modern Art Museum, Shanghai, China
IMAYO: JAPAN'S NEW TRADITIONISTS, The Art Gallery at the University of Hawai'i, Mānoa, Honolulu, United States; Museum of Art Honolulu, United States; and Shoto Museum of Art, Tokyo, Japan
2015 *for humans*, Jiro Miura Gallery, Tokyo, Japan.
2014 *ZAUBERBOX*, Micheko Galerie, Munich, Germany
Impacts! -勢み - Japanese Contemporary Art, in collaboration with Mizuma Art Gallery, Tokyo, Japan, Zane Bennett Contemporary Art, Santa Fe, New Mexico, United States
2013 *Koganecho Bazaar 2014*, Yokohama, Japan
View of the movie world of MITANI Kouki by TANEDA Yohei, The Ueno Royal Museum, Tokyo, Japan
Tokyo Miyage of GAZOKU, Book gallery Popotam, Tokyo, Japan
KIZUNA - emerging women artists from Japan, Micheko Galerie, Munich, Germany
Soluble Fish -Continued Realities -, Gallery Fleur of Kyoto Seika University of Fine Arts, Kyoto, Japan
Tainai-meguri & Miyage of GAZOKU, The Kyoto Traditional Craft Museum, Kyoto, Japan
2012 *Gold Experience 2: - Homage to the Golden Tiger Fish*, Satellite Gallery, Aichi Prefectural University of Fine Arts and Music, Nagoya, Japan
2011 *Kan-Hikari Art Expo*, Jijo Castle, Kyoto, Japan
Gekitsutsu-ten, Unseal Contemporary, Tokyo, Japan
2010 *Le Japon Vintage et Contemporain*, Galerie Vanessa Rau, Paris, France
GOLD EXPERIENCE: Contemporary Painting with Gold Leaf from Korea and Japan, Gallery Hyun, Seoul, South Korea.
The 6th Chinese Character Festival, Making Waves Contemporary Art Exhibition, National Chiang Kai-shek Memorial Hall, Taipei, Taiwan

Public Collection

Spencer Museum of Art, Lawrence, Kansas, United States
Honolulu Museum of Art, Honolulu, Hawaii, United States

小林智



Kobayashi Satoshi

Born in Chiba, Japan, 1981
Lives and works in Singapore

Education

2007 M.F.A. in Japanese Painting, Tokyo Art University, Tokyo, Japan
2005 B.F.A. in Japanese Painting, Tokyo Art University, Tokyo, Japan
2000 Majored in Art Course, Bunka Gakuin High School, Tokyo, Japan

Solo Exhibitions

2018 *Of Craft and Carving*, UOB Art Gallery, UOB Bank Group, Singapore
2014 *The World of Living Things*, Gallery Zerohachi, Ginza, Tokyo, Japan
2010 *Pink Eyes Girl*, Gallery Sakamaki, Ginza, Tokyo
Not Flat, Gallery Sakamaki, Ginza, Tokyo
Kobayashi Satoshi, Gallery Sakamaki, Ginza, Tokyo

Group Exhibitions

2019 *Eyes & Curiosity—Flowers in the Field*, Mizuma Gallery, Singapore
2017 *Art Stage Singapore*, UOB Booth, UOB Bank Group, Singapore

Awards

2016 Bronze Prize, UOB Painting of the Year, UOB Bank Group, Singapore
2013 Shortlisted for The Ueno Royal Museum Award, The Ueno Royal Museum, Tokyo, Japan
Shortlisted for Biennale Ome, Ome City Educational Committee, Ome, Japan
Shortlisted for Art Award Debut, Gekkan Bijutsu Art Magazine, Japan
2012 Kashiwa City Award, Kashiwa City Hall, Chiba, Japan
Sekaido Award, Sekaido Art Shop, Tokyo, Japan



Kobayashi Satoshi
Untitled
2019
mixed media (low relief wood board, acrylic ink, and acrylic paint)
140 x 225 cm

水野里奈



Mizuno Rina

Born in Aichi, Japan, 1989
Lives and works in Aichi, Japan

Education

2014 M.A. in Oil Painting, Tama Art University, Tokyo, Japan
2012 B.A. in Oil Painting 2, Nagoya University of Arts, Nagoya, Japan
2010 B.A. in Fine Art Painting, Exchange Program with University of Brighton, Brighton, United Kingdom

Solo Exhibitions

2018 *- mizu no musubime -*, Gallery Orin, Ibaraki, Japan
- nested structure -, Roppongi Hills A/D Gallery, Tokyo, Japan
2017 *ARKO2017 Rina Mizuno*, Ohara Museum of Art, Okayama, Japan
2016 *Boundary Line*, Dai-ichi Life South Gallery, Tokyo, Japan
2015 *Nesting Mirage*, taimatz, Tokyo, Japan
2014 *Garden in Spread*, Marunouchi-building 7F, Tokyo, Japan
2013 *Dazzle Painting*, taimatz, Tokyo, Japan
2012 *H.P.FRANCE — Window Art Gallery Marunouchi*, Tokyo, Japan
taimatz, Tokyo, Japan

Group Exhibitions

2019 *Eyes & Curiosity—Flowers in the Field*, Mizuma Gallery, Singapore
2017 *The Encyclopedia of Masamichi Katayama Life is hard... Let's go shopping*, Tokyo Opera City Art Gallery, Tokyo, Japan
2016 *Arts Challenge 2016*, Aichi Arts Center, Aichi, Japan
2015 *VOCA: The Vision Of Contemporary Art 2015*, The Ueno Royal Museum, Tokyo, Japan
2015 *Fruitfulness - Contemporary Art in Toyokawa*, Toyokawa City Sakuragaoka Museum, Aichi, Japan
2014 *Joint Graduation Exhibition of 5 Art Universities*, The National Art Center, Tokyo, Japan
2013 *AICHI TRIENNALE 2013*, ARTISAN-building, Aichi, Japan
2012 *Holiday in the loft*, MOMONO YAKATA 2F, Aichi, Japan
2011 *neWs*, Art Lab Aichi, Aichi, Japan

Awards

2015 The 30th Holbein Scholarship
Honorable Mention, VOCA 2015, The Ueno Royal Museum, Tokyo, Japan
2014 Mitsubishi Estate Co. Ltd. Prize, Art Award Tokyo Marunouchi 2014, Tokyo, Japan
2014 Yuji Wakamatsu Prize, 3331 Art Fair - Various Collectors' Prizes, Tokyo, Japan
2012 H. P. FRANCE PRIZE, Art Award Tokyo Marunouchi 2012, Tokyo, Japan
Excellence Award, First Prize of Brighton University Award, Nagoya University of Arts Degree Show, Aichi, Japan

Public Collections

Daiwa Press, Japan
Mitsubishi Estate, Tokyo, Japan
The Dai-ichi Life Insurance Company Limited, Japan
JAPIGOZZI Collection, Switzerland
Ohara Museum of Art, Kurashiki, Japan